



THE CAPITAL REQUEST

Colonial schools are, on average, 60 years old. . . . **It's Time.**

*We want every aspect of Colonial Nation to be a source of pride once again.
It's time to restore, update and improve facilities in Colonial.*

THE STATE AGREES IT'S TIME AND WILL PROVIDE 60% OF THE FUNDING (\$73.2 MILLION)

- We must provide the remaining 40% (\$48.8 million) to secure the State's investment •

IF THE REFERENDUM DOES NOT PASS, THE STATE FUNDING WILL BE MOVED TO OTHER STATE PROJECTS OUTSIDE OF COLONIAL.



ROOFING

Repairing and restoring aging roofs

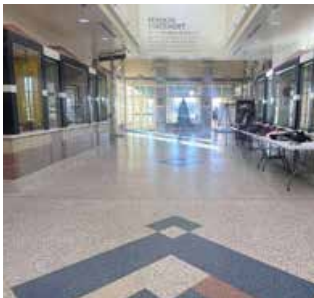
- McCullough Middle
- Pleasantville Elementary
- Southern Elementary
- Wilmington Manor Elementary
- William Penn High



PARKING & ROADWAY IMPROVEMENTS

Improving and enhancing parking lots and road ways including car rider lanes.

- All CSD Schools



BUILDING SECURITY

Secure entrances & enhancements

- All CSD Schools



SITE DRAINAGE & GRADING

Improving drainage & preventing erosion including repair of roof gutters & drainage piping.

- All CSD Schools



ADA SITE IMPROVEMENTS

Providing ADA compliant equipment/surfaces, parking & accessibility.

- All CSD Schools



PEDESTRIAN IMPROVEMENTS

Repairing, sealing and leveling sidewalks as well as resetting of brick walkway pavers as needed.

- All CSD Schools



NEW PLAYGROUND EQUIPMENT

- Upgrading playground equipment and grounds**
- Carrie Downie Elementary
 - Castle Hills Elementary
 - Eisenberg Elementary
 - Kathleen Wilbur Elementary
 - New Castle Elementary
 - Pleasantville Elementary
 - Southern Elementary School
 - Wilmington Manor Elementary



ATHLETIC FIELD IMPROVEMENTS

Upgrading running/walking tracks, playing fields at secondary schools & addition of new multisport athletic complex at William Penn.

- George Read Middle
- Gunning Bedford Middle
- McCullough Middle
- William Penn High

**February 29, 2024
from 7 am - 8 pm**

**STAY UP TO DATE AND ASK QUESTIONS
VISIT COLONIALSCHOOLDISTRICT.ORG**

WHEN AND WHERE DO WE VOTE?

Voting: February 29, 2024 from 7 am - 8 pm

WHO CAN VOTE:

- If you live in the Colonial School District, are at least 18-years old, a citizen of Delaware and the USA; you can cast your vote at one of the registered polling places listed on our website
- Be prepared to show proof of identity – a State Driver’s license or State I.D.

POLLING PLACES

- Castle Hills Elementary School: . . . 502 Moores Ln, New Castle, DE 19720
- Weston Senior Center: 1 Bassett Ave, New Castle, DE 19720
- Kingswood Community Center: . . . 2300 Bowers St, Wilmington, DE 19802
- McCullough Middle School: 20 Chase Ave, New Castle, DE 19720
- New Castle Senior Center: 400 South St, New Castle, DE 19720
- Pleasantville Elementary School: . . . 16 Pleasant Pl, New Castle, DE 19720
- Route 9 Library: 3022 New Castle Ave, New Castle, DE 19720
- Southern Elementary School: 795 Cox Neck Rd, New Castle, DE 19720
- Victory Christian Fellowship: 100 Wilton Blvd, New Castle, DE 19720
- Wilbur Elementary School: 4050 Wrangle Hill Rd, Bear, DE 19701
- William Penn High School: 713 E Basin Rd, New Castle, DE 19720

HOW MUCH IS THIS GOING TO COST?

Calculations below are based on average Colonial household assessed value of \$62,547

	FY 2025	FY 2026	FY 2027	FY 2028
OPERATING REFERENDUM	\$156.37 yr	\$218.91 yr	\$250.19 yr	\$250.19 yr
CAPITAL REFERENDUM	\$5.00 yr	\$58.79 yr	\$65.67 yr	\$73.81 yr
YEARLY TOTAL	\$161.37 yr	\$277.77 yr	\$315.86 yr	\$324.00 yr



The most accurate way to determine the cost of the referendum in relation to your school taxes is to look up your property tax assessment on the county website, www3.newcastlede.gov/parcel/search.
In Delaware, homes are assessed for taxes at around 1/4th their market value.

Use our calculator at colonialschooldistrict.org to learn more about how this referendum will impact your taxes.

SUPPORT FOR SENIORS

YES, the State of Delaware does offer tax relief for Seniors.

Individuals 65 and older, who meet a residency requirement (3 years if you established residency before 12/31/2017; 10 years if you established residency after that date), are eligible for a school tax credit of up to \$400 on their Principal residence.

A School Tax Credit Application can be found at: <https://www.nccde.org/182/Tax-Exemptions>.

Seniors may also apply for additional reductions in sewer and county property tax based on income. For more information about these programs, call the County at 302-395-5520.

HOW TO STAY UP TO DATE AND ASK QUESTIONS

Visit colonialschooldistrict.org for updates and ask questions!

