

The Power of
WE ARE **WP**
COLONIALS

Early Childhood
Leadership & Disruptive
Innovation
Access & Opportunity
Community
Students
Staff
Families

WILLIAM PENN HIGH SCHOOL

Welcome 2018 - 2019

Dr. Brian M. Erskine, Principal

Admin Team

Brian Erskine, Ed.D - Principal

James Zimmerman - Deputy Principal

Assistant Principals

STEM COLLEGE ACADEMY

Bill Johnston & Lisa Brewington

BUSINESS COLLEGE ACADEMY

Erik Jones & Tierney DuBard

HUMANITIES COLLEGE ACADEMY

Jen Wisowaty

Dean of Students:

Steve Haber

Brian Polaski

Support Staff

Matt Sabol - Athletic Director

Wellness Center - Christiana Care

Communities in Schools

Jobs for DE Grads

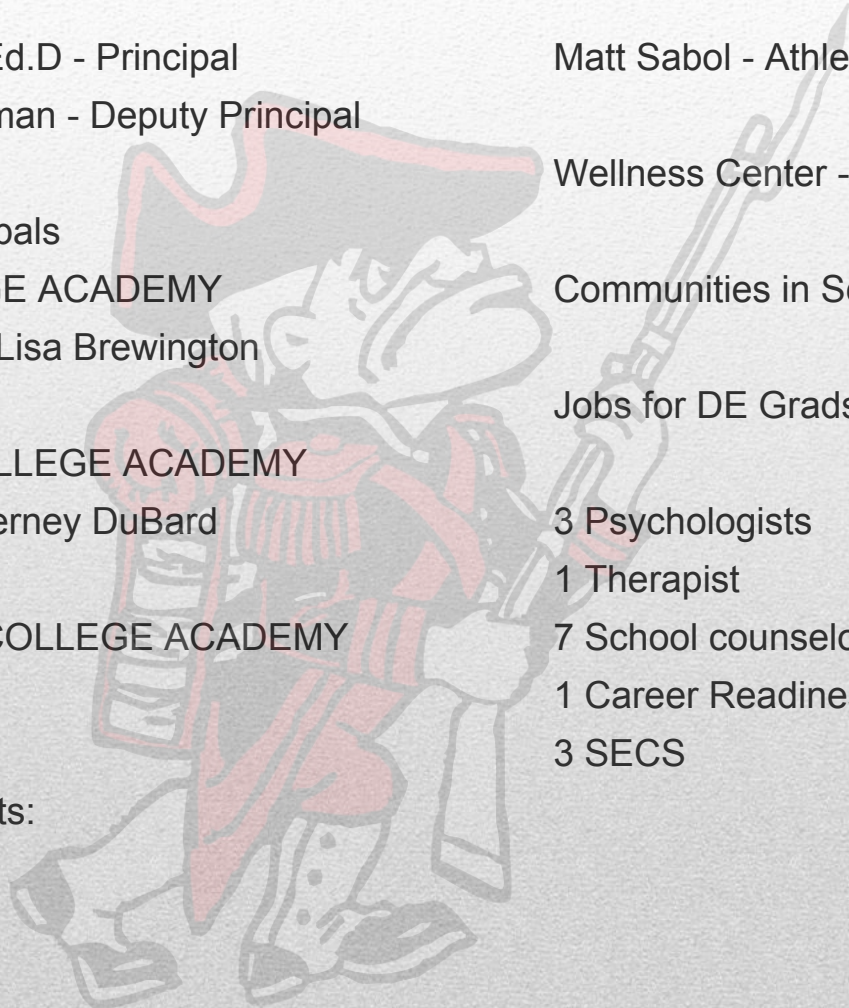
3 Psychologists

1 Therapist

7 School counselors

1 Career Readiness counselor

3 SECS





Admin Team

The Power of



Who are WE?

What are WE trying to do here?

—

Mission (this is what we do)

- Create an environment that supports college and career readiness, giving students access to opportunities.

Vision (this is why we do it)

- Prepare all students for a productive life beyond high school graduation

Why are we here....?



and BEYOND...

19 DEGREE PROGRAMS

STEM COLLEGE	BUSINESS COLLEGE	HUMANITIES COLLEGE
Agriculture	Air Force Jr ROTC	Behavioral Sciences
Manufacturing	Business Administration	Education (Teacher Academy)
Construction	Culinary Arts	International Studies
Engineering	Financial Services	Legal Studies
Allied Health Services	Marketing	Communications
Computer Science (I.T.)		Visual & Performing Arts
Mathematics		
Science		



Degree Program Course Selection Guide 2018 – 2019

WILLIAM PENN HIGH SCHOOL
Home of the Colonials



[Academics](#) ▾ [School Counseling](#) ▾ [Activities](#) [Athletics](#) ▾ [Parents and Students](#) ▾ [News](#) [Alumni](#) ▾

2018 – 2019 WP Course Selection Guide

2_5 UD WP Course Selection by Degree Program FY19

ADVANCED PLACEMENT COURSES

List of Advanced Placement Courses

Course Title	Level	Department
AP English Language	AP	Language Arts
AP English Literature	AP	Language Arts
AP Calculus BC	AP	Math
AP Calculus AB	AP	Math
AP Statistics	AP	Math
AP Biology	AP	Science
AP Physics	AP	Science
AP Chemistry	AP	Science
AP Environmental Science	AP	Science
AP Physics II	AP	Science
AP Physics C (Mechanics)	AP	Science
AP Human Geography	AP	Social Studies
AP Macroeconomics	AP	Social Studies
AP Microeconomics	AP	Social Studies
AP Psychology	AP	Social Studies
AP World History	AP	Social Studies
AP US Government (online)	AP	Social Studies
AP US History	AP	Social Studies
AP Computer Science Principles	AP	Technology Sciences
AP Computer Science A	AP	Technology Sciences
AP Spanish	AP	World Language
AP French	AP	World Language

PROGRAM OF STUDY
EXAMPLES

STEM
BUSINESS
HUMANITIES

ENGINEERING

The focus of **Engineering** is to expose students to engineering standards through the design process, research, and data analysis. Students are given the opportunity to develop these skills and understand engineering concepts through Project Lead Their Way (PLTW). The exploration of various technology systems and manufacturing processes shows students how engineers use math, science and technology to solve problems to benefit people. This program prepares learners for post-secondary learning in all engineering fields or entry-level related careers in engineering technology. These students are also eligible for the **Manufacturing Program** through DTCC, starting their Junior year.

Recommended Program of Study

Grade 9 1. English I 2. Integrated Math I 3. Integrated Science I 4. Geography/Civics 5. Physical Education/Health 6. Introduction to Engineering 7. World Language 8. Elective	Grade 11 1. English III 2. Integrated Math III 3. Chemistry 4. US History 5. World Language 6. Engineering Design & Development 7. AP Physics II 8. Elective
Grade 10 1. English II 2. Integrated Math II 3. Biology 4. Economics 5. Physical Ed/Drivers Ed/ 10 th Seminar 6. Principles of Engineering 7. World Language 8. AP Physics	Grade 12 1. English IV 2. AP Mathematics course 3. Exploring Computer Science 4. Ind. Study in Engineering 5. Elective 6. AP Physics C 7. Elective 8. Elective

Additional courses or electives that relate to this major:

Computer Science & I.T. Specialist courses
After School: Science Olympiad, VEX Robotics
 AP Science courses
 Manufacturing courses at DTCC
 Environmental Science courses

It is expected that engineering students take at least one AP class in both Math and Science.



ALLIED HEALTH

Allied Health careers are in high demand. The *Allied Health* major is designed to be a springboard for students to develop the skills and behaviors necessary to enhance their knowledge and practice of general health and wellness. With a focus on Health Care Technician, students explore and prepare for the following medical fields: **Phlebotomy, EKG, Medical Laboratory; Exercise Science, and Pre-Med.** William Penn has developed a partnership with Christiana Care and UDEL – Med Lab program. Many opportunities exist in health services after graduation, including college, specialized medical technology training, and associated entry-level careers in the medical, health fitness and sports medicine field.

Recommended Program of Study

<p>Grade 9</p> <ol style="list-style-type: none"> 1. English I 2. Integrated Math I 3. Integrated Science I 4. Geography/Civics 5. Physical Education/Health 6. Introduction to Health Care Technician 7. Elective 8. World Language 	<p>Grade 11</p> <ol style="list-style-type: none"> 1. English III 2. Integrated Math III 3. World Language 4. US History 5. Chemistry 6. Clinical Laboratory Diagnostics 7. Anatomy & Physiology 8. Elective
<p>Grade 10</p> <ol style="list-style-type: none"> 1. English II 2. Integrated Math II 3. Biology 4. Economics 5. Physical Ed/Drivers Ed/ 10th Seminar 6. Essentials of Medical Diagnostic Careers 7. World Language 8. Elective 	<p>Grade 12</p> <ol style="list-style-type: none"> 1. English IV 2. Statistics 3. Diagnostics Services Technician (Phlebotomy and EKG) 4. AP Biology or Chemistry 5. World Language 6. Paramedical Science 7. Elective 8. Elective and/or Clinical

Additional courses or electives that relate to this major:

After School: Science Olympiad

Physics₁

Exercise Science, Psychology, Sociology (semester courses)

Certification Program: Certified Medical Laboratory Assistant

(www.nhanow.com); EKG, Phlebotomy

Additional certification opportunities: EMT, EMR, Life Guard, Personal Trainer



VISUAL & PERFORMING ARTS (Pathways)

Courses for each of our VPA programs

Fine Art

Introduction to Art (Open to all students)
Art Design I (Art majors & minors)
Art Design II
Art Design III
Studio Art Portfolio
Portfolio 1 & 2 (*Independent Study*)
AP Studio Art: Design & Drawing

After School: Penn Players Stagecraft
Penn Studio Scholarship



Theatre

Introduction to Theatre
Theatre Production II
Theatre Production III
Stage Crew I
Stage Crew II

After School: Penn Players



Instrumental Music

9th Grade

Fundamentals of Music
Wind Ensemble (level I) or
Percussion Ensemble (level I)

10th Grade

Symphonic Band
Piano Class (1/2 Credit)
Guitar Class (1/2 Credit)

11th Grade

Symphonic Band
Song Writing (1/2 Credit)
Music Production & Business (1/2 Credit)

12th Grade

Symphonic Band
Independent Music Study
American Music History

After School:

Marching Band
Jazz Band
Penn Players Pit Orchestra
Steel Band
Indoor Percussion
Pep Band

Vocal Music

9th Grade

Fundamentals of Music
Beginning Chorus (level I)

10th Grade

Concert Choir (level II)
Piano Class

11th Grade

Concert Choir or Select Ensemble (level III)
Songwriting (1/2 Credit)
Music Production & Business (1/2 Credit)

12th Grade

Concert Choir or Select Ensemble (level IV)
Independent Music Study
American Music History

After School:

Penn Players
Gospel Choir
Soloist Instruction
Women's Choir



SUPPORTING ALL STUDENTS

- Title I
- Breakfast and Lunch
- RTI (English and Math)
- SAT Prep
- ADVISORY PROGRAM (Restorative Circles)
- ELL Programs
- SPED Programs
- Saturday School

WPHS Website

<http://www.colonialschooldistrict.org/schools/william penn/>

William Penn High School Facebook Page

<https://www.facebook.com/william penn high school>

SUPPORTING PARENTS

Parent Workshop Series

Financial Aid

Scholarships

Technology

Curriculum

GOOGLE DRIVE

SIGN IN



Google Search

I'm Feeling Lucky

Search

Images

Drive

Calendar

Sites

Groups

Contacts

Maps

YouTube

More -

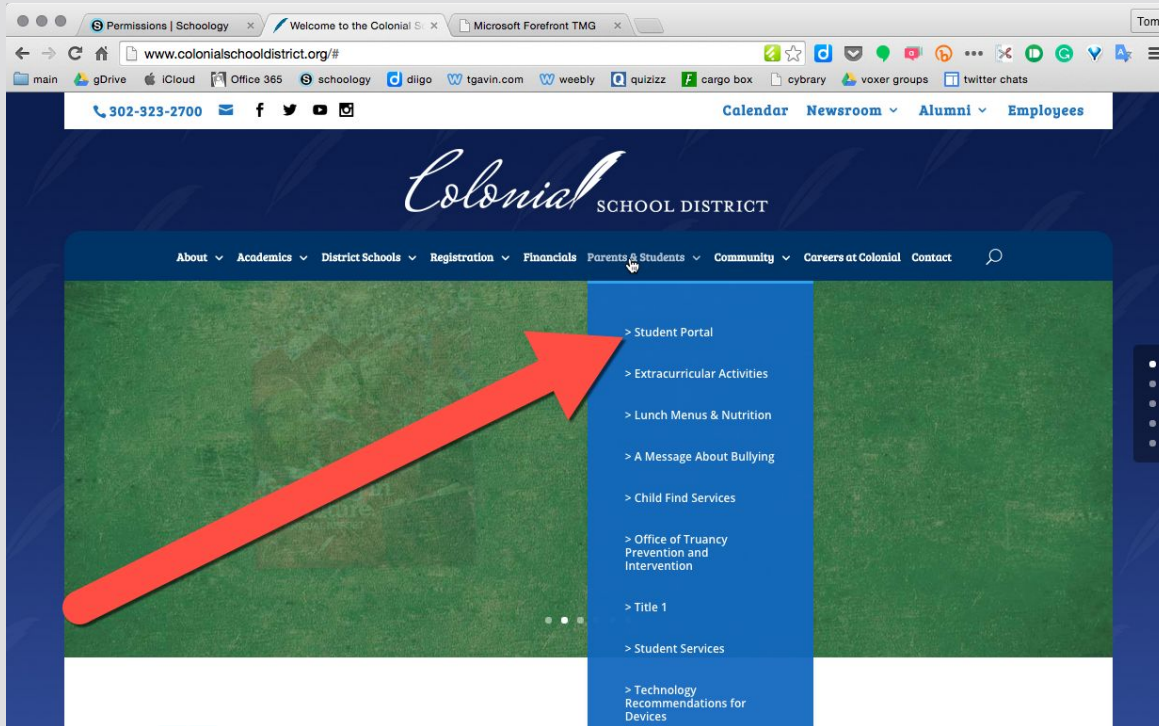


Google Search

I'm Feeling Lucky

Student login: studentID@colonial.k12.de.us password: 8 digit birthdate

SCHOOLLOGY



Parents will receive an Access Code so they can see materials and student grades, but not information pertaining to other students in the class.

Student username will be their studentid@colonial.k12.de.us and their 8 digit date of birth

PARENT SCHOOLGY ACCESS

<http://www.colonialschooldistrict.org/parents-students/schoolgy-for-families/>

HOME ACCESS CENTER (HAC)

Login

Home Access Center allows parents and students to view student registration, scheduling, attendance, assignment, and grade information. Home Access Center is available for the districts listed in the dropdown to the right. Please make sure to select the correct district when logging in to Home Access Center

Please enter your account information for Home Access Center.

Select a District: Colonial School District

User Name:

Password:

[Forgot My Username or Password](#)
[Click Here to Register for HAC](#)

Login

Start your internet browser (i.e. Internet Explorer, Google Chrome, etc.)

Go to:

- <https://hac.doe.k12.de.us/HomeAccess/>

From the Home Access Center Login

- Click the down arrow to Select our School District
- Click in the Username field to enter your username
- Click in the Password field to enter your password
- Click the Login button

Call the school if you need your username and/or password.

WHAT'S NEW THIS YEAR?

Digital Piano Lab

Music Room renovation

Marching Band Trailer

Engineering III Curriculum

Criminology class for our Legal Studies major

Career Readiness Counselor

Teacher Academy Placements

3C Project: Climate, Culture, School Citizenship

Restorative Circles, Staff Training

OTHER ITEMS

- 10 Point Grading Scale
- Consistent Grading Practices
- Teacher online presence
- Clubs & Athletic Programs
- Dress Code
- Attendance
- Parent Involvement
- Promotion Requirements
- Dual enrollment, Internships (11th and 12th grade)

We want your child involved beyond 2:15PM

- Marching Band
- Choir
- Dance Troupe
- Vex Robotics
- Science Olympiad
- Chess Club
- Key Club
- Student Council
- Penn Farm
- Business Professionals of America (BPA)
- DECA (Marketing)
- Penn Bistro
- Penn Publications
- ACE Mentoring (Architecture, Construction, Engineering)
- Penn Post
- School Store
- Math League
- National History Day
- Penn Players
- Stage Crew
- Jazz Band
- Relay for Life

AFTER SCHOOL PERKS

After school buses: 4:00 PM on Tuesday & Thursdays

Athlete buses: 5:15 PM - Monday through Friday

Supper Feed Program



ColonialsSports.com

William Penn High School - Sports Schedules, Results, Rosters & Photos

[Home](#) [Today's Games](#) [Calendar](#) [Standings](#) [Tournaments](#) [Excusals](#) [Contact Us](#)

[Home](#)

Fall

Football

CheerLeaders

Cross Country

Field Hockey

Soccer - Boys

Unified Flag Football

Volleyball - Girls

Marching Band

Winter

Basketball - Boys

Basketball - Girls

Cheerleaders

Swimming

Track - Indoor

Wrestling

Spring

Baseball

Golf

Lacrosse-Boys

Soccer - Girls

Softball

Tennis - Boys

Tennis - Girls

Track & Field

2018 - 2019 Sports

7/12/2018

Starting for the 2018-2019 school year, the athletic department will be switching to the convenience of online sports registrations. The platform we will be using is called Family ID. All athletes will be required to get a physical and have the corresponding DIAA physical form completed and then create an account on the Family ID website to complete the rest of the registration process.

[WP Family ID Landing Page](#)

[WP Family ID Sports Registration Page](#)

[Family ID Help Page](#)

Fall sports begin August 15, 2018. Anyone wanting to participate in a sport must have a physical on file with our Athletic office and be cleared academically based on FINAL Grades from 2017-2018. Physicals must be completed on the DIAA form, which can be accessed on the lower left hand corner of our home page. All physicals for the 2018-2019 school year must be dated after April 1, 2018. Athletes that are members of our Wellness Center should schedule appointments to get their physicals completed. The Wellness Center will be closed from June 15th - July 30th.

The schedule from: July 31st - August 2nd will be from 8AM - Noon.

August 6th - August 9th - 8AM - 3PM

August 13th - 14th - 8AM - 3PM and August 15th - 8AM - 2PM

The phone number to the William Penn Wellness Center is [\(302\) 324 - 5740](tel:3023245740).

Message from the Athletic Director

6/7/2018

SCHOOL NURSE INFO

Direct Phone Number 302.323.2835

Michelle Maloy, RN (A-K)

Michelle.maloy@colonial.k12.de.us

Denise Zavitsky, RN (L-Z)

Denise.zavitsky@colonial.k12.de.us

IMMUNIZATIONS

- All incoming freshmen are now required to have a physical (within the prior 2 years of entering 9th grade), tetanus booster and a meningococcal vaccine – please be sure the school nurse has a copy of this if you haven't done so already.
- Whenever your child is given a new vaccine, please send in a copy of the record for the school nurse

MEDICATIONS

- If your child needs a medication to be given during the school day, please bring the medication to the Nurse's' office in its original container with the prescribing label on it. It should be dated for this school year. There will be a form to sign in the office. Any questions, please call or email us.

EMERGENCY CARDS

- Please complete the emergency card (aka student data card or student registration card) asap and have student return to homeroom teacher. This is crucial for us to have.
- If your child has any allergies, please make note on the card.

EPI PENS

- If your child has life threatening allergies and has an EpiPen, he/she may carry it on them or they may leave it in the nurses' office. If they choose to carry it, they must have permission from the NURSE, their GUARDIAN, and the PHYSICIAN.

SEE ONE OF THE NURSES FOR PAPERS

ASTHMA

If your child has asthma, they may carry their own inhaler, but they **MUST** have a permission slip signed.

- **SEE THE NURSES FOR PAPERS**

CHRONIC CONDITIONS

- If your child has a chronic condition (seizure disorder, diabetes, heart disease, urinary/bladder issues, anxiety, etc), please let us know by calling or stopping in to the nurses' office. It is critical that we are aware of this information in the event of an emergency.
- If there is an “as needed” medication for this condition, we will be happy to keep a few doses in the nurses' office. A permission slip is needed for that also – we have those in the office.

WELLNESS CENTER

- We highly recommend signing your student up for the Wellness Center in the building.
- Once they are registered, they will be members for their time here at WPHS.
- There are no out of pocket expenses for students.
- The link for registration papers is on our website..

NURSE WEBSITE

• <http://www.colonialschooldistrict.org/schools/william penn/parents-students/lab-1/>



- To reach this link – go to the William Penn High School webpage, click on parents/students, health services, school nurse.

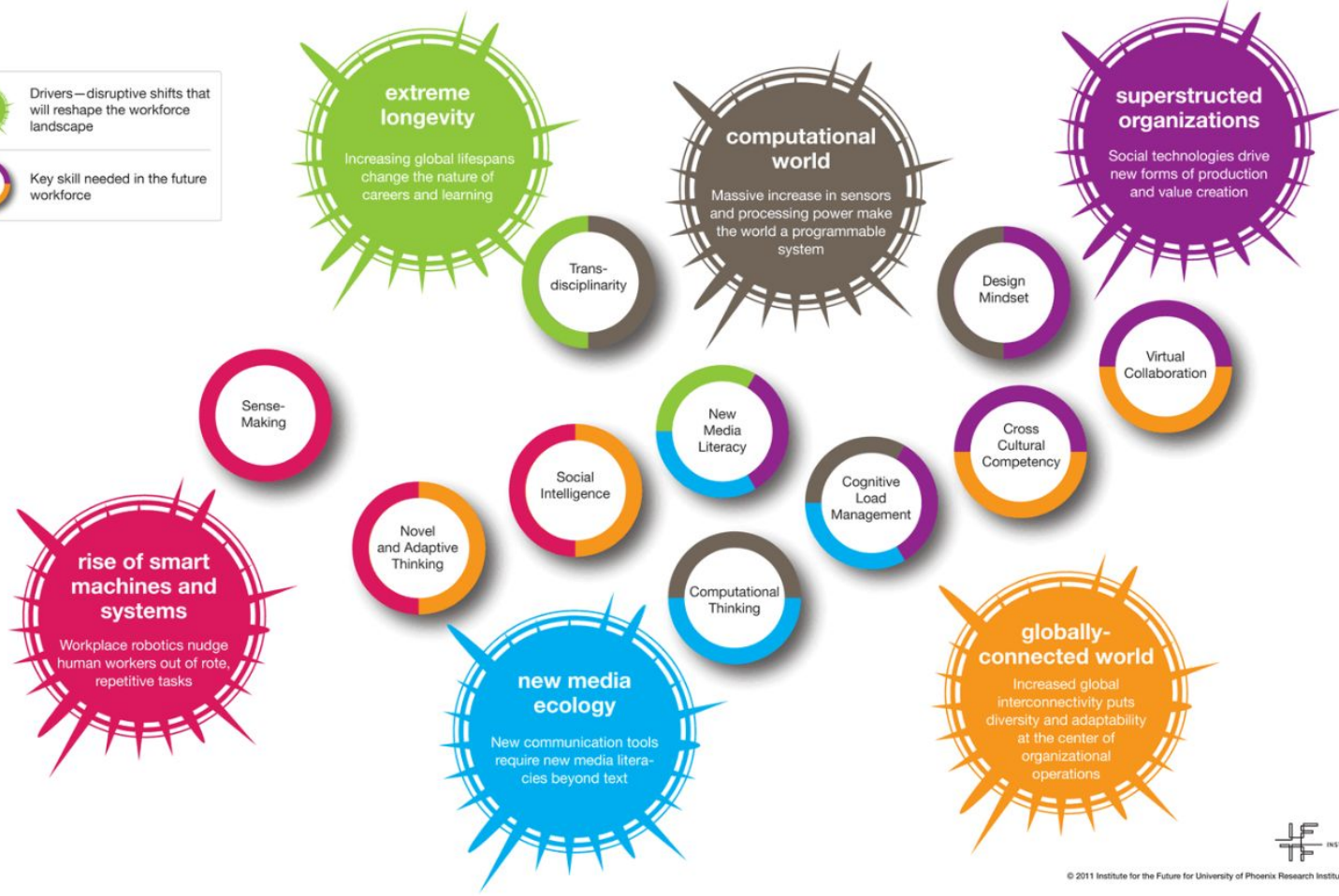
MORE WILLIAM PENN INFO

Future Work Skills 2020

While all six drivers are important in shaping the landscape in which each skill emerges, the color-coding and placement here indicate which drivers have particular relevance to the development of each of the skills.

KEY

-  Drivers—disruptive shifts that will reshape the workforce landscape
-  Key skill needed in the future workforce



© 2011 Institute for the Future for University of Phoenix Research Institute, AI

WE ARE ALWAYS THINKING ABOUT THE FUTURE, ABOUT JOBS, ABOUT CAREERS...

WILLIAM PENN HIGH SCHOOL

What does **21st Century Learning** look like



INNOVATION TECH CENTER

William Penn is committed to offering our students access to ALL opportunities in their academic career. To further support our students, William Penn has partnered with Discover Card to remodel our existing library space and transform it into a multi-media learning center. This new space will provide students with access to new technology, a student run bistro, digital learning and modern collaboration spaces. Students will have the ability earn both high school credits (expanding our online course catalogue) and dual enrollment (HS + college) credits.

INNOVATION CENTER

DISTANCE LEARNING

Through a partnership with Florida Virtual School, William Penn will expand our online course offerings. These courses cover a variety of levels from college prep to Advanced Placement. Primary instruction is provided online, allowing students to engage in learning at their own pace; all while being supported by content experts (WP teachers) and the program coordinator. This approach models many courses offered at the

DUAL ENROLLMENT

Dual enrollment courses are classes in which students receive both high school and college credit. In a dual enrollment course, students will experience college level work but in a setting where they are comfortable and confident with their high school teachers. Dual enrollment courses allow students to begin their college experience. We will partner with local colleges and universities such as UDEL, Wilmington University, and Del Tech.



LEAD INSTRUCTOR: SARA CUJE

WILLIAM PENN HIGH SCHOOL
EARLY COLLEGE PROGRAM
with WILMINGTON UNIVERSITY

ATTENTION JUNIORS & SENIORS
Earn College Credits BEFORE You Graduate High School

TAKE online courses in our Innovation Center, **EARN** college credits, **SAVE** on future tuition costs by transferring credits, and **EXPERIENCE** early college.



Further details can be found at <http://www.wilmu.edu/earlycollege/>

STARTS SPRING SEMESTER 2018

SAVINGS

Colonial
SCHOOL DISTRICT

REGULAR TUITION AT WILMU

\$363 per credit
\$1,089 for a three credit course

EARLY COLLEGE PROGRAM AT WPENN

\$32 per credit
\$121 for a three credit course



WP
COLONIALS

WILLIAM PENN EVENT

- **WPENN Walkthrough;**

Thursday; August 23RD

5:00 – 7:00 PM

- Bring your bus transportation info which includes your child's homeroom and walk the building. No teachers will be present, but Admin will be here to answer your questions.

August 2018**WILLIAM PENN HIGH SCHOOL**

Sun	Mon	Tue	Wed	Thu	Fr	Sat
Updated 8/9/18			1	2	3	4
5	6	7	8	9	10	11
12	13 12 month employee regular work week beg'ns	14 School Board Meet'ng 7pm GR	15 New Parent Mtg 6:30 PM First day of Fall Sports	16	17	18
19	20 New Teacher Mentor Mtg	21 New Employee Breakfast	22 First Teacher Day Staff Development	23 Staff Development WP Walkthrough 5 - 7 PM	24 Staff Development FLEX Day New Teacher PD in Innovat'on Ctr	25
26	27 First Student Day Grade 9 ONLY	28 A Homeroom First Day of School Grades 9-12	29 B Homeroom	30 A Homeroom Staff B'g Picture	31 Schools Closed	

FIRST DAY
GRADE 9 ONLY
MONDAY, AUGUST 27

JOIN US FOR BREAKFAST
7:15AM



appreciate.



The Power of

Thank you for making
Colonial Nation strong!